

June 2006

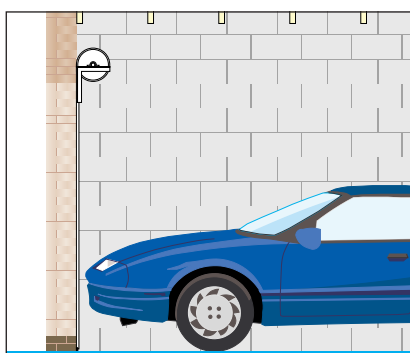
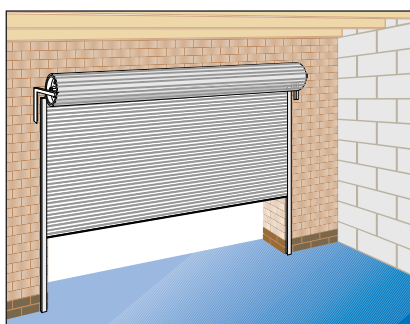
HENDERSON
GARAGE DOORS



THE
ROLLER
GARAGE DOOR RANGE

HENDERSON

SAFE, SECURE AND SPACE SAVING



Henderson roller doors are designed to be fitted directly onto brickwork to give you the maximum opening width to your garage. The door curtain opens with no arc of travel, allowing you to park right up to the door both in the garage and on the driveway.

Henderson roller garage doors help you to make the most of the space in your garage, give you the full drive-through width and allow you to use your driveway to its full.

Installed behind the brickwork opening, the door rolls up around a drum with no outswing or arc of travel as it opens and closes.

This allows you to park right up to the door and to use the overhead space within the garage. There's no need for a timber frame so you keep the maximum drive through width, particularly useful if the entrance to the garage is narrow.

All Henderson roller doors are supplied in a tough and durable finish. Choose from either a Platisol finish available in a choice of ten attractive

colours, or choose a laminate finish available in three superb colours. Your door is supplied finished and will not need to be painted - the occasional wash is all it needs to keep it looking like new.

The door is designed to be simple to use and light to lift by hand. If you would like a touch of luxury, a Henderson remote control system can be added during production, enabling you to open and close the door at the touch of a button from the comfort of your car.

Whatever colour you choose and whether you decide on manual operation or remote control, a Henderson roller garage door will complement your home for years to come.

STYLISH DESIGN

HENDERSON
SOON

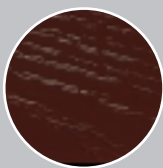


Henderson roller garage doors are made from a continuous steel curtain, with the exterior face pre-coated in a choice of two durable finishes.

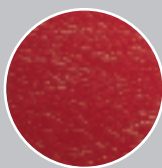
HP200* Plastisol finish



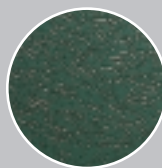
FULLY FINISHED
WHITE



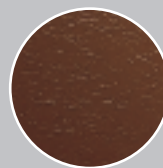
FULLY FINISHED
MAHOGANY



FULLY FINISHED
BURGUNDY RED



FULLY FINISHED
BRITISH RACING GREEN



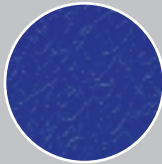
FULLY FINISHED
VANDYKE BROWN



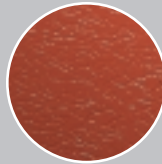
FULLY FINISHED
GOLDEN OAK



FULLY FINISHED
BLACK



FULLY FINISHED
NIGHT BLUE



FULLY FINISHED
TERRACOTTA

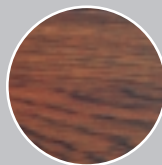


FULLY FINISHED
MUSHROOM

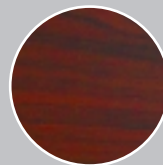
Laminate finish



FULLY FINISHED
OAK



FULLY FINISHED
DARK OAK



FULLY FINISHED
ROSEWOOD



Your door finish is guaranteed for a period of 10 years

Due to the printing process, colour likeness cannot be guaranteed. Ask your installer for a colour swatch or contact the Henderson Customer Service Team.

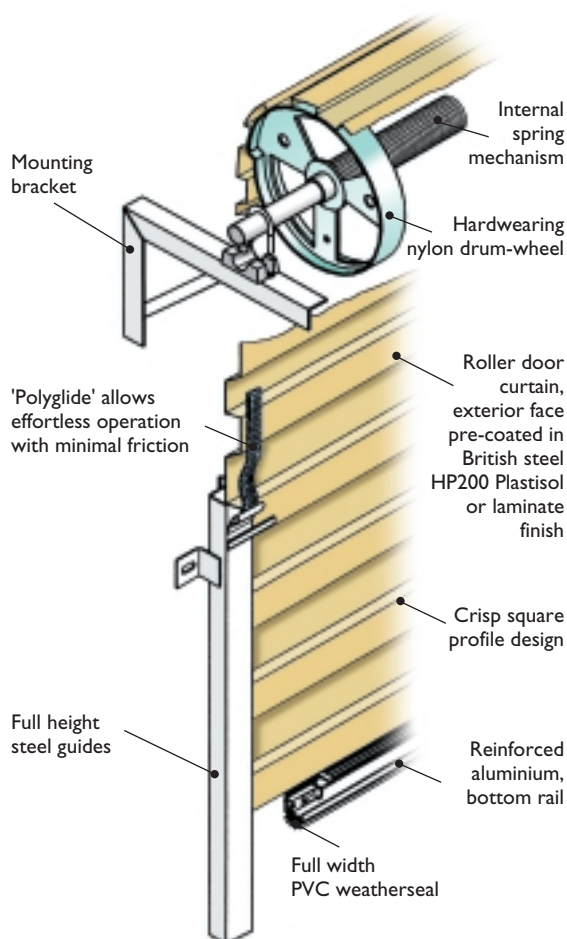
* HP200 is a registered trademark of Corus plc.

ATTENTION TO DETAIL

Every Henderson roller door is manufactured to the same high exacting specification to provide you with an attractive door that is smooth to open and close, secure, space saving and guaranteed to last.

Henderson Roller garage doors ...

- Fit behind the brickwork opening, ideal for arched garages or where the opening is awkward
- Require no timber frame, keeping installation simple and giving you the maximum possible drive through opening width
- Roll up around a neat drum located above the opening. With no outswing or arc of travel, you can park right up to the door - ideal if you have limited space on your driveway
- Incorporate 'Polyglide' running strips to give a smooth and lightweight door operation
- Have full height steel guides, a reinforced aluminium bottom rail and full width dual locking bars for unsurpassed security
- Are supplied pre-coated in a choice of two durable finishes, HP200* Plastisol available in ten colours or laminate available in three colours. Your door will not require re-painting and the finish is guaranteed by Henderson for 10 years
- Are fitted with a full width bottom PVC weatherseal to keep rain and leaves out of your garage
- Are available with the added luxury of factory fitted remote control



All mechanical components are guaranteed for a period of 2 years

HENDERSON
GARAGE DOORS

THE LUXURY OF REMOTE CONTROL

On a cold, wet, windy day, one of the last things you want to do is get out of your car to open your garage door. With the addition of a Henderson remote control system, you won't have to. Simply open and close the door from the comfort and safety of your car at the push of a button.

SECURITY CODED REMOTE CONTROL

The remote control system operates on a rolling code - after each press of the button, the security code 'rolls' to a new window within a combination of 2 billion codes, making it virtually impossible to copy. The door can also be operated from inside the garage using a push button built into the control box.

SMOOTH AND SILENT

The gear mechanism is constructed from hardwearing nylon, ensuring a long, maintenance free life and is housed completely within the door roll, ensuring virtually silent operation.

SAFETY

The Henderson Glidermatic remote control system will sense any obstruction during the downward movement of the door and reverse to allow any trapped object to free itself. In the event of a power failure, the door can be switched to manual control from inside the garage. You also have the option of setting a short "sound buzzer" to alert you when the unit is activated.

WELCOMING LIGHT

When you open the door, a courtesy light comes on automatically on the control box to welcome you home and to help you park and leave the garage safely

AUTO CLOSE OPTION

The Henderson Glidermatic can be set to close automatically from 5 to 60 seconds after the door has opened - particularly useful for communal garages or the forgetful!

UNIQUE FITMENT

The drive unit is housed completely within the drum mechanism and does not extend past the width of the door - particularly important if your garage has limited side room. And for the simplest installation possible Henderson can factory fit the motor to the drum.



Once you've had a Henderson remote control system fitted, you'll never want to be without one again

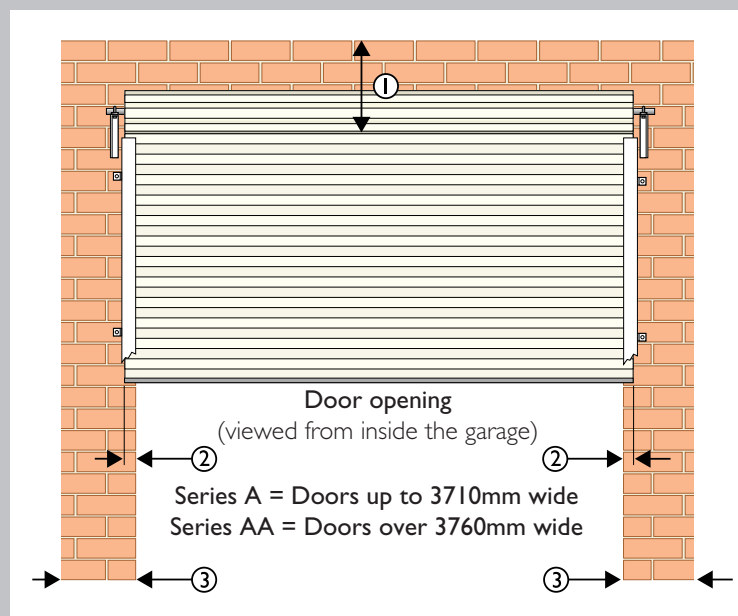


The Henderson Glidermatic remote control system is guaranteed for a period of 2 years

The Henderson Glidermatic Unit is supplied with two transmitters as standard.

HOW TO MEASURE UP

Henderson roller doors are measured by curtain size and are available in made to measure sizes up to 16'5" wide x 9'10" high. To measure your garage, follow the guidelines below. To order your door, find the height from the floor to the underside of the brickwork opening and the width from brickwork to brickwork (plus the overlap explained in section 2)



Henderson Guarantee

The door curtain of your Henderson roller door is guaranteed for a period of 10 years from the date of supply. The mechanical components and electric operator components are guaranteed for a period of 2 years from the date of supply. Terms and conditions apply, full details are available on request.

Henderson Product Policy

As our policy is one of continual product development, we reserve the right to introduce improvements to designs and changes to specifications without notice.

① The headroom required from the top of the opening to any obstruction or the underside of the ceiling/rafters is 420mm. A headroom as low as 300mm can be used, but the underside of the rolled up door will show when the door is in the open position. Headroom clearance must extend for a minimum of 450mm back from the opening (to give enough space for the rolled up door).

② The door should overlap the opening on **each side** by:
Series A : 25mm Series AA : 50mm

Therefore to specify the opening width, state the opening + 50mm (Series A) or opening + 100mm (Series AA). State the height from floor to the underside of the brickwork.

③ The minimum sideroom required between the opening and the side wall of the garage at **each side** is 100mm. This is to ensure there is enough space to install the support brackets and guides. For automated doors add an extra 25mm sideroom on each side.

U.K. Customer Services Department

Consumer enquiries: 0871 226 8335 - Trade enquiries: 0191 3777 333 - Facsimile: 0191 377 2972

P C Henderson Ltd

Durham Road, Bowburn, County Durham, DH6 5NG, England
www.pchenderson.com
sales@pchenderson.com

P C Henderson (Ireland) Ltd

West Link Industrial Estate, Kylemore Road, Dublin 10, Eire
Telephone: 01626 0444 Facsimile: 01626 0455
www.pchenderson.ie sales@pchenderson.ie



INVESTOR IN PEOPLE

HENDERSON

A company in the Cardo Group