

Installation Instructions For

TRACKED

Unframed Single GRP Garage Door

(where the door is to be fitted to a timber garage door frame)

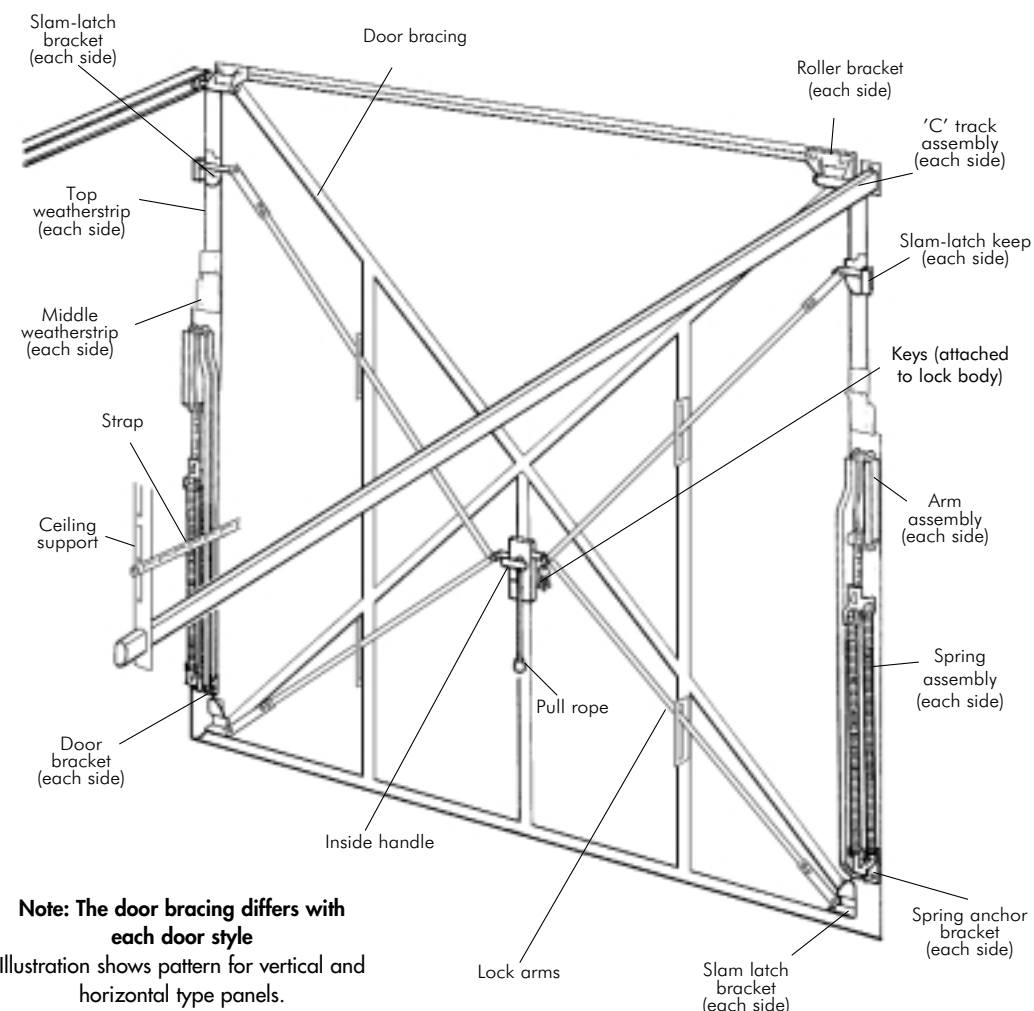
Always read the care and maintenance label thoroughly.
Part No. 002440
Issue No. 04 December 2004

PC Henderson Limited
Durham Road, Bowburn, County Durham DH6 5NG
Telephone: 0191 377 1441 Fax: 0191 377 2972



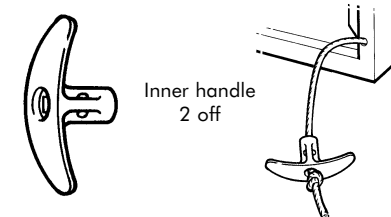
UNFRAMED TRACKED DOOR

Familiarize yourself with the terms for the door components before starting the installation. The door and components must be installed by suitably trained and qualified persons, in accordance with the instructions provided. If in doubt contact a professional installer. It is important that the installation does not deviate from the instructions provided such that all requirements of EN 12604 and EN 12453 are met and if necessary verified (from May 2004). Once installed the door should be labeled in accordance with EN 13241 (from May 2004).



Note: The door bracing differs with each door style
Illustration shows pattern for vertical and horizontal type panels.

NOTE: Two inner handles are provided to make the door easier to lift during transit. They are attached by ropes to the bottom sides of the door chassis and should be removed once the door is secured in position. They will be used in step 12.



IMPORTANT

Check that all contents are included in the packs and that the door size is correct for the opening (see label on side of door - the label refers to the size of opening and not size of door). The following parts are supplied separately and must be checked before starting installation: -

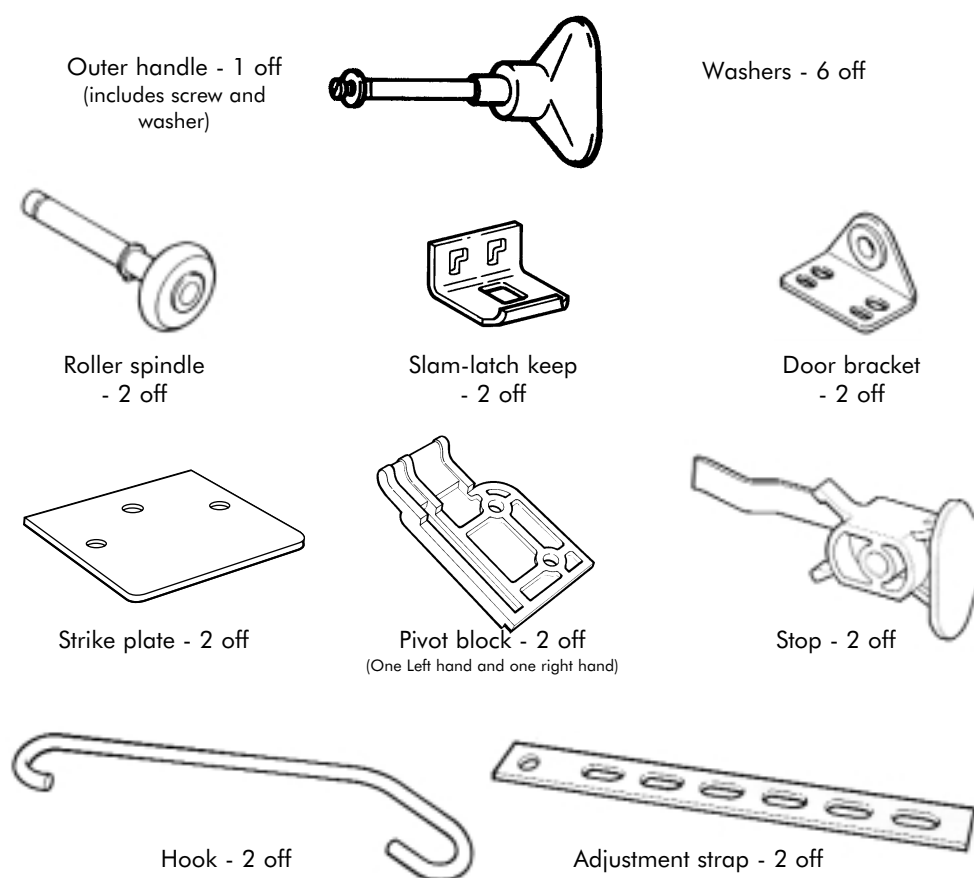
Gear Pack	'C' track assembly	1 off - see contents list
	Weatherstrip pack	1 off - see contents list
	Fittings pack	1 off - see contents list
	Pre-Pack	1 off - see contents list

Installation is carried out from inside the garage. Ensure that you have adequate lighting and that all tools and fittings are inside the garage BEFORE you start.

Ensure you have the outer handle with you before leaving the garage during installation. Whilst operating the door be aware of the area it moves through. Keep people and objects out of the way. When manually operating the door, control the leading edge of the door by hand throughout the opening and closing cycle. When the door is in the open position, always ensure it is fully open/as far back as possible.

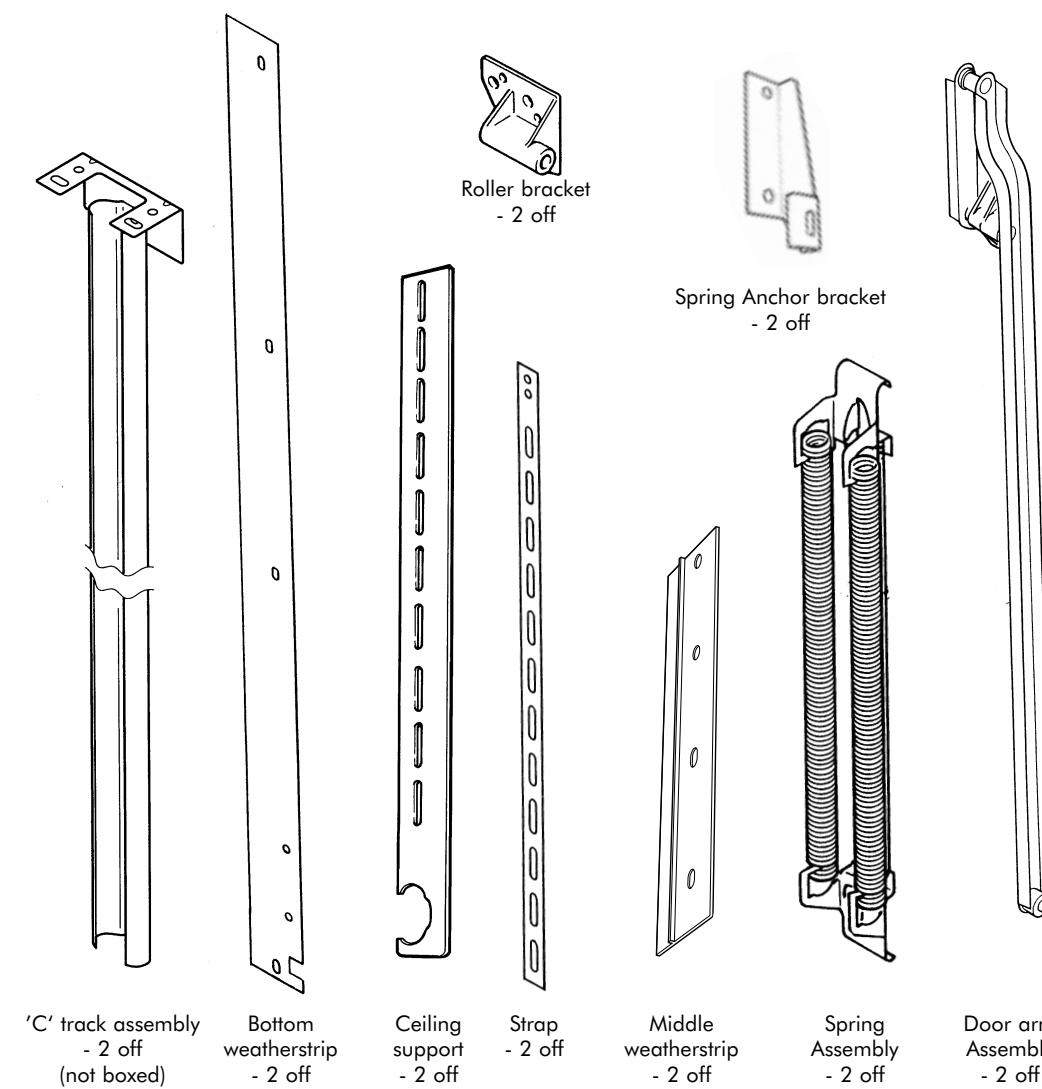
Ensure that good safety practices are employed during installation. Use good quality tools and take appropriate care if using any electrical equipment. Always check for dangerous features in the workspace such as sharp edges, protrusions or concealed or damaged electrical wiring

CONTENTS OF THE FITTING / PRE PACK



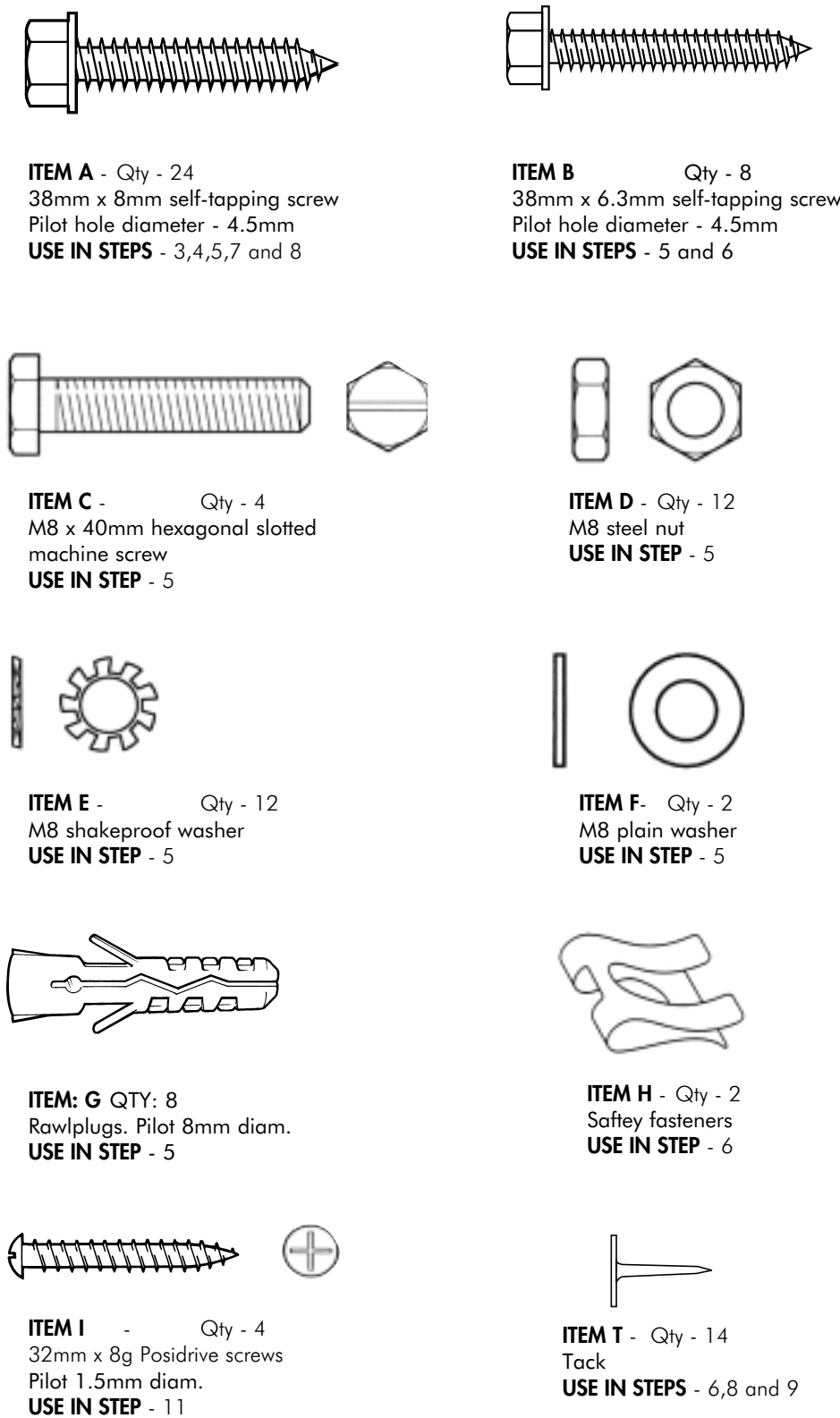
Note: If you are short of any of the items mentioned, please contact your supplier.

CONTENTS OF THE GEAR PACK



CONTENTS OF FIXINGS PACK

SHOWN ACTUAL SIZE

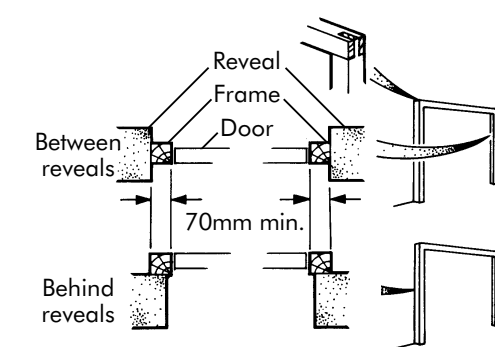


1 CHECK EXISTING FRAME DIMENSIONS

Before installation ensure a suitable good quality frame is fitted, ideally hardwood or softwood timber 76mm x 76mm.

Timber of different sizes may be used:-
Head 38mm minimum
Side 70mm minimum
The frame may be between or behind the reveals, must be secure, square and upright. It is important that the back surfaces of the frame are flush.

Note: All doors include the necessary clearances.



2 PLACE THE DOOR IN POSITION

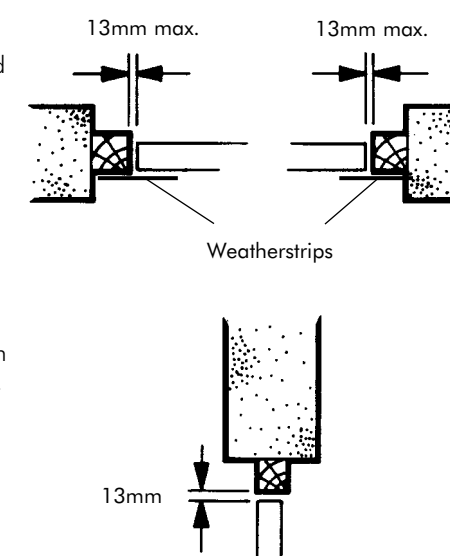
You should carefully remove the fittings pack and other loose items attached to the door. Remove the protective wooden batten from the bottom of the door (where fitted). Handle the door carefully to avoid damage.

At this stage ensure that all equipment and fittings are inside the garage.

Position the door within the frame, ensuring that the top weatherstrips are flush against the frame legs.

Temporarily secure the door in position. Place 2 x 10mm packers in the top of the door, lift and wedge the door on both sides until it is in contact with the packers at the top. Ensure that the following clearances are established between the door and frame.

Top	= 10-13mm
Each Side (Premier Door)	= 8-11mm
Each Side (Castle Door)	= 10-13mm
Bottom	= 10-15mm

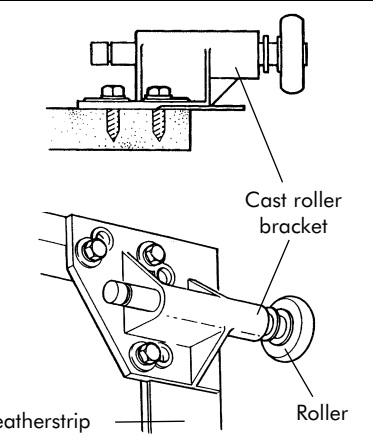


3 FIT THE ROLLER BRACKETS AT THE TOP WEATHERSTRIP

Secure the cast alloy roller brackets over the top weatherstrips using 38mm x 8mm self-tapping screws **A** using the 3 large holes in the bracket. Ensure that the roller brackets are aligned squarely with the top of the door and insert the roller spindles into the roller brackets.

When all installation steps have been completed, the rollers must still be able to be turned by hand.

Similar to artwork as figure 2 tracked single unframed GRP doors - but remove head of fastener shown securing the top weatherstrip and outer profile of roller bracket base is changed - photograph available



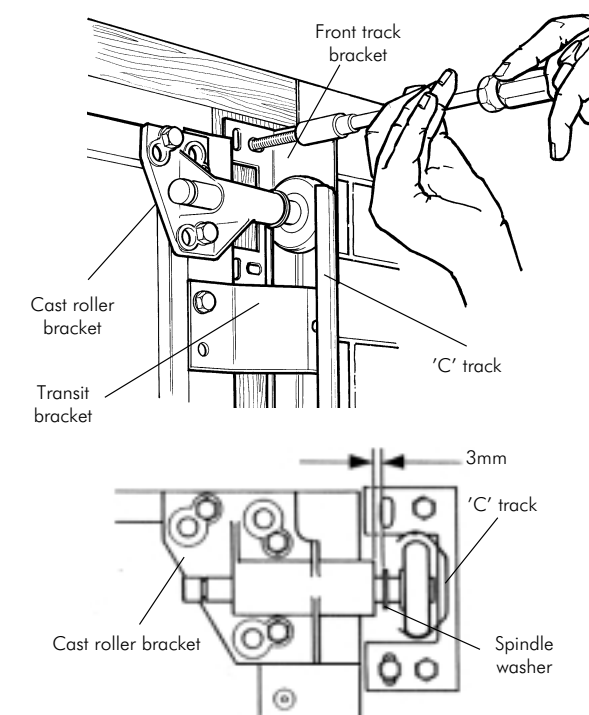
4 ATTACH THE 'C' TRACKS

'C' tracks are supplied pre-assembled to the front track brackets. Support the rear end of the 'C' track and place the front over the roller as shown.

Using 38mm x 8mm screw **A**, fit front track brackets to the side frames, first through the top vertical slotted hole as shown and then through the lower vertical slotted hole. Note - a third fastener is added to each track bracket later (see step 5).

Ensure the roller spindle clearance between the cast roller bracket and spindle washer is 3mm as shown.

Note: The rollers are not required to support the weight of the door. It is important that the rollers can be moved by hand once the temporary door supports used in step 2 are removed.



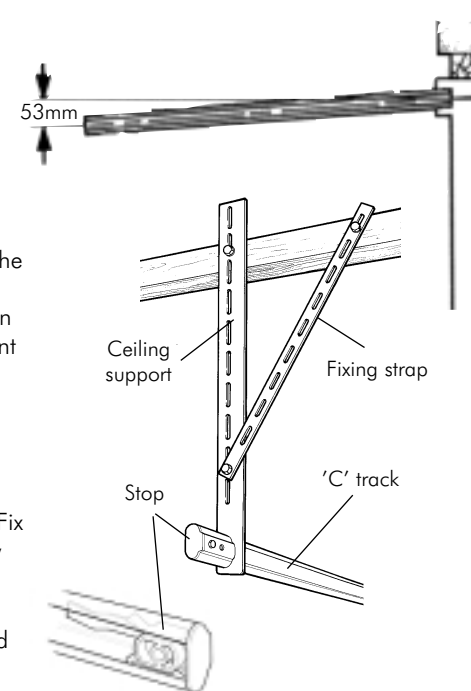
5 ALIGN THE 'C' TRACKS

Slide the adjustable ceiling support over the rear of the 'C' tracks and raise the tracks. Ensure the 'C' tracks are parallel and angle downward from the face of the door to the back of the garage by approximately 53mm

Secure ceiling support and fixing straps into the ceiling using fixings **B, C, D** and **G** (not required if secured to timber). Ensure 'C' tracks are square to the opening. Diagonal measurement of the tracks from corner to corner should be equal. Check the position of the roller at the front of the track. Position the front track brackets to provide a small clearance at the bottom of the roller (1mm). Now fix 50mm x 8mm screws **A** in the remaining bottom hole of the 'C' track front bracket (see step 3).

Insert the track roller stop into the end of the track. Fix using M8 x 40mm hexagonal slotted machine screw **C**, nut **D** and washers **E** and **F**.

Important: Correctly fitted 'C' tracks will be rigid and parallel and will not require intermediate supports.

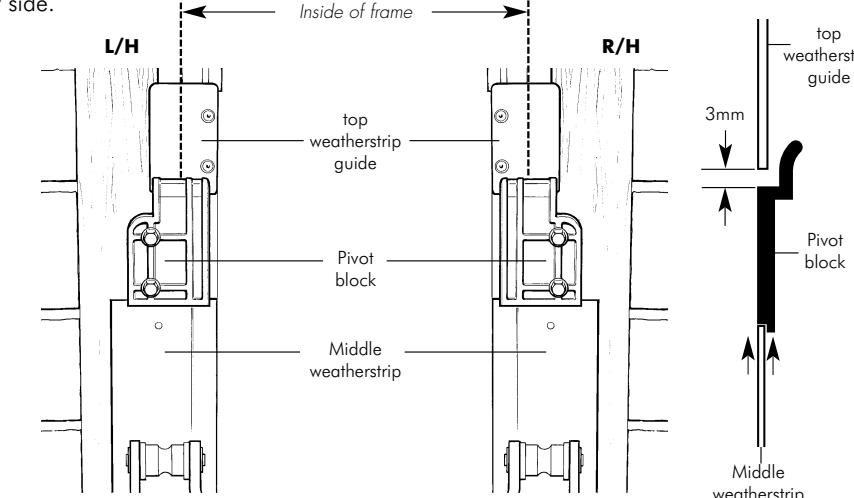


6 LOCATE PIVOT BLOCKS & MIDDLE WEATHERSTRIPS

The pivot blocks are handed. Line up the edge of the pivot block with the inside edge of the frame leg, ensuring there is a gap of approximately 3mm between the top of the pivot block and the bottom edge of the top weatherstrip guide, as shown.

Secure using two 38mm x 6.3mm screws **B** through the holes provided. Repeat the holes provided. Repeat for the other side.

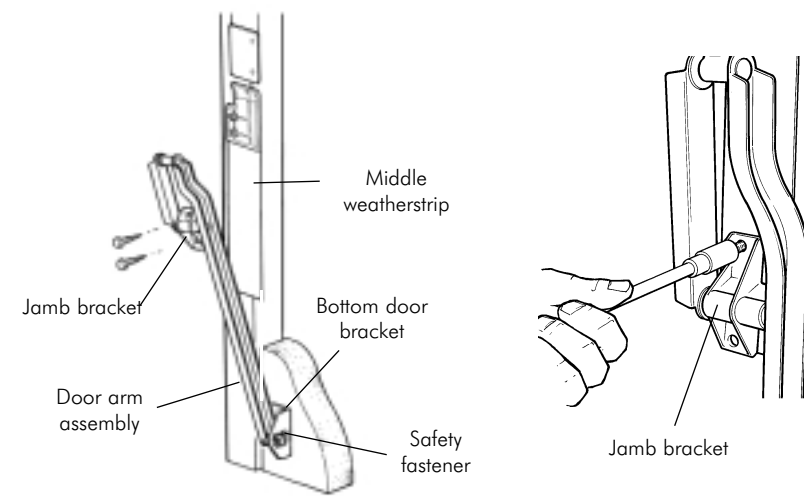
Slide the middle weatherstrip under the rebate at the bottom of the pivot block, ensuring that the rubber edge overlaps the door edge and the plastic edge is level with the inside edge of the pivot block. Secure to the frame through the top hole in the weatherstrip using a tack **T**. Repeat for the other side.



7 SECURE THE GEAR ARM JAMB BRACKET TO THE FRAME

Ensure that the pivot block and middle weatherstrip are correctly positioned. Carefully mark through the plastic weatherstrip to position the pilot holes for the jamb bracket. Pilot drill, avoiding damage to the weatherstrip, and secure the jamb brackets and gear arms using the 38mm x 8mm screws **A**.

Utilizing the pilot holes provided in the door, attach both bottom door brackets, using the holes furthest from the edge of the bracket with 38mm x 8mm screws **A**. Locate the door arms into the bottom door brackets and secure using safety fasteners **H**, fully tighten bottom door brackets



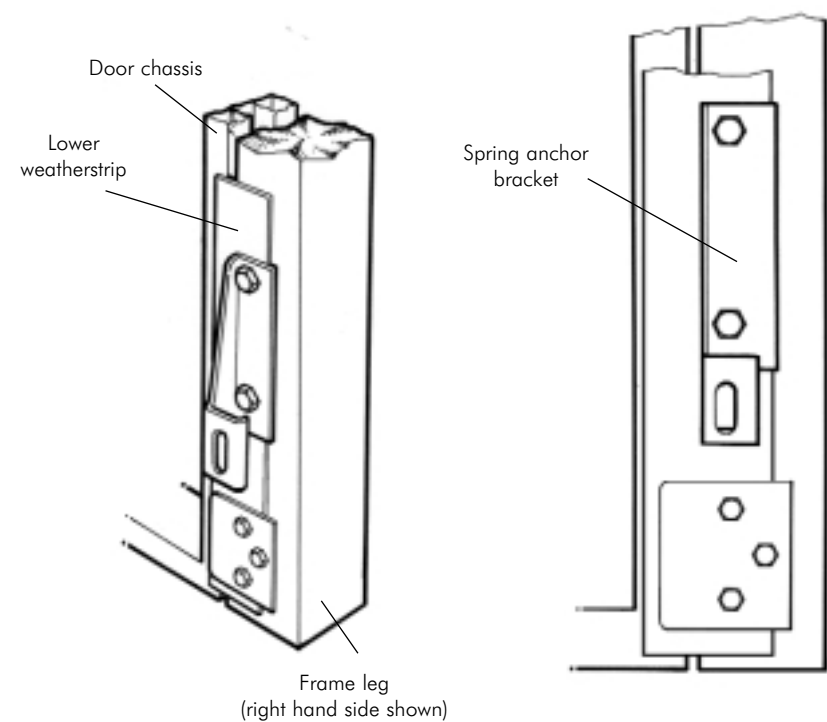
8 FIT THE SPRING ANCHOR BRACKETS & STRIKE PLATES

For Doors 2101 mm high and above.

Butt the bottom weatherstrip against the middle weatherstrip. Align and flatten the bottom weatherstrip against the frame leg and secure using one or more tacks **T**. Use the lower holes as templates to pilot drill five holes 4.5 mm diameter in the frame. Position the spring anchor bracket over the weatherstrip and secure using 2 off 38mm x 8mm self tapping screws **A**. If the weatherstrip is excessively long the excess may be removed using scissors. The strike plate should be positioned on top of the weatherstrip to align with the three holes and fastened with 3 off 38mm x 6.3mm self tapping screws **B**.

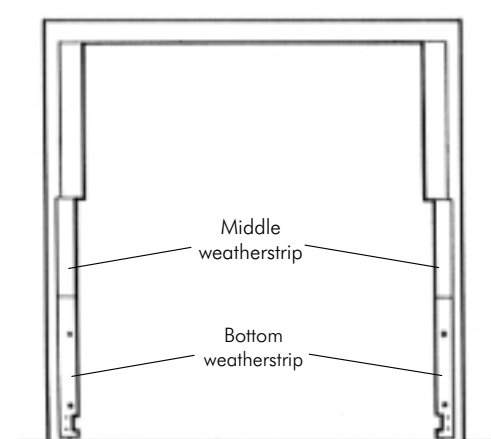
For Doors 2100 mm high and below.

Here a longer strike plate is used and the spring anchor bracket is secured on top. Align and flatten the bottom weatherstrip against the frame leg and secure using one or more tacks **T**. If the weatherstrip is excessively long the excess may be removed using scissors. Use the lower holes as templates to pilot drill two holes 4.5mm diameter in the frame. Position the strike plate over the weatherstrip and locate the spring anchor bracket provided onto the strike plate. Secure using 2 off 38mm x 8mm self tapping screws **A**.



9 SECURE THE BOTTOM WEATHERSTRIPS

Ensure that the weatherstrips have been positioned correctly and that they lie flat against the frame legs. Using tacks **T** secure the unsupported end of the section of the weatherstrips to the frame leg. The tacks should be hammered into position carefully.



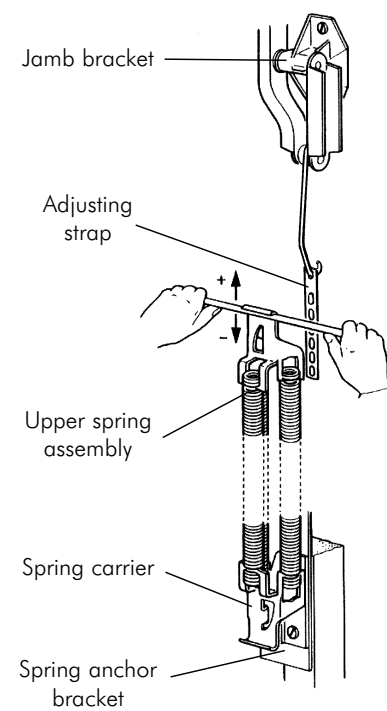
10 FIT THE DOOR SPRINGS

Remove the items being used to temporarily secure the door in position. Grip the door and simultaneously release the catches by pulling the lock arms. Slowly and carefully open the door and carefully locate a prop to hold the door safely while the springs are fitted.

Locate the spring carrier onto the hook on the spring anchor bracket, ensuring that the hook has located properly as shown.

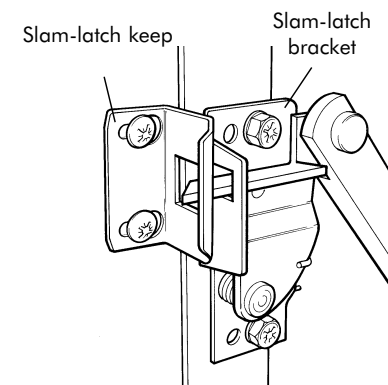
Using a suitable lever, carefully lift the top part of the spring assembly and locate the hook into one of the slotted holes on the adjusting strap as shown. Ensure that the same slotted hole is used on both sides of the door.

Support the leading edge of the door leaf and carefully remove the door leaf support prop. Guide the door towards the closed position until the tension of the springs supports the door. Ideally the door will be well balanced and should find a natural 'at rest' position at about 2/3 of the way down. If necessary re-support the door leaf and adjust the spring tension as necessary (move up the slotted plate to increase the spring force and down the slotted plate to reduce the spring force).



11 FIT THE TOP SLAM LATCH KEEPS

Position the slam latch keep to correctly engage over the slam latch. A 2mm clearance should be provided between the adjacent faces of the slam latch keep and the slam latch bracket to allow free movement of the door leaf at opening. Pilot drill as recommended and secure the slam latch keep in position using two 32mm x 8 gauge posidrive screws **I**. Fit the second keep.



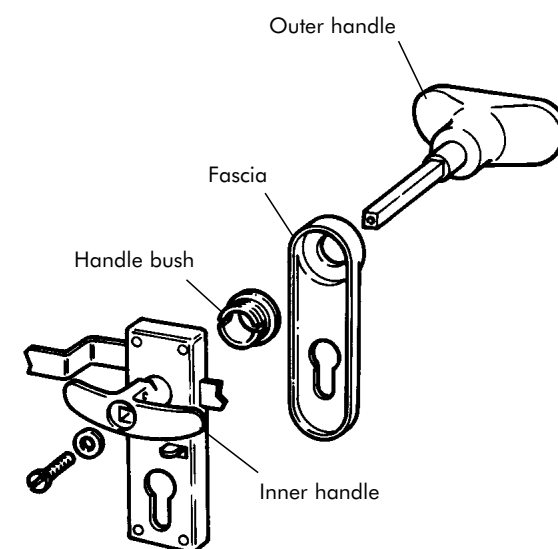
The bottom slam latches locate against the lower metal strike plate and do not require slam latch keeps to be fitted.

12 FIT THE LOCK

With the lock supported on the inside, push the handle bush into position from outside and fit the fascia by inserting the fixing lugs into the holes until they 'snap-in'. Remove the screw and washer from the outer handle and pass the handle through the lock as shown. Fit one of the inner handles and secure using the screw and washer just removed. Check the operation of the handle and lock mechanisms.

The second inner handle should now be attached with the rope below the lock body, on the door bracing. Thread the rope through the hole provided and knot securely to make a 'rope pull'.

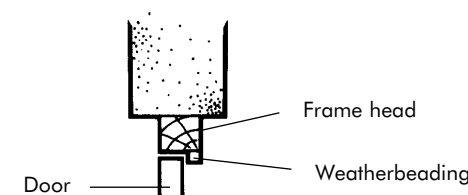
Note: The fascia is not supplied for the Merlin, Doric, Durham and Victoria steel doors and is supplied pre-fitted to timber doors.



13 COMPLETING THE INSTALLATION

When the installation is complete, apply a small amount of oil to the pivot points.

When installing into a timber frame of the recommended size, fit a 25mm x 25mm weather beading to the outside of the frame head as shown.



14 TROUBLESHOOTING

If you experience any problems with the operation of your door firstly check the frame and door installation as shown in steps 1 to 14 and ensure all installation steps have been followed correctly.

PROBLEM SOLVING

- Problem** The door sticks out from the frame at the bottom.
- Solution 1** Ensure roller spindles can move freely in the 'C' tracks. If necessary, reposition 'C' track front brackets. See step 4.
- Solution 2** Ensure there is a 3mm gap between the top weatherstrip guide and the pivot block. See step 6.
- Solution 3** Release the spring tension and straighten the frame leg. Fasten the frame to the wall above the jamb bracket and below the spring anchor bracket and secure the base to the floor using a suitable bracket.
- Problem** The door 'kicks across' to one side when open.
- Solution** Ensure the 'C' tracks are parallel. Measure diagonally from corner to corner. The distance should be equal. Re-position if necessary. See step 5.
- Problem** The handle is stiff to turn.
- Solution** Apply a drop of lubricating oil to the handle bush - see step 12.

15 DISMANTLING

The door must be dismantled with care. Always ensure that the structure is well supported during dismantling and that parts are not allowed to fall or pivot in an uncontrolled manner.

Start from inside the garage and ensure that all necessary lighting, tools and personnel are available. The door should be opened and propped securely in the opening. The door springs can be carefully removed by disengaging from the adjustment strap (see note 10 for reference). The springs, adjustment straps and hooks can now be detached from the door. The door leaf should now be carefully moved to the closed position and the door and frame should be secured with supports.

The gear arms can now be detached from the frame - taking care to lower the arms to the floor after removal of the fixing screws (see note 7 for reference)

Release the 'C' tracks from the ceiling supports and lower towards the front of the door. Remove the ceiling track supports (see note 5 for reference)

Detach the 'C' track front brackets from the frame taking care to support the 'C' tracks which will then detach from the opening (see note 4 for reference)

Remove the spring anchor bracket and strike plates by removing the local fasteners (see note 8 for reference). Remove the pivot blocks (see note 6 for reference)

Remove the top slam latch keeps to release the engagement of the slam latch (see note 11 for reference).

The door can now be carefully handled; the prop supports removed and the door will release from the opening. Ensure that hands will not come into contact with any sharp edges and wear gloves if necessary. Always take care when handling heavy items.

Carefully remove the lower weatherstrips and tacks ensuring that they are not left in the vicinity where they can be trodden or driven upon.

Dispose of all unwanted parts in accordance with best practices and legislation.